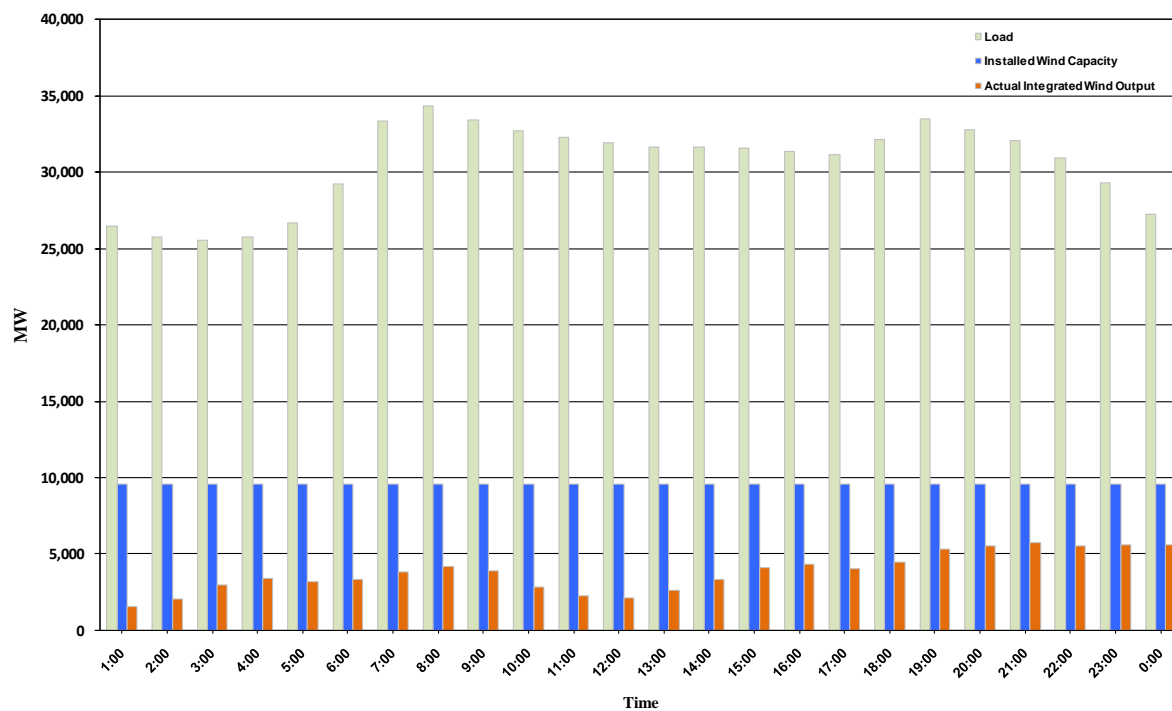




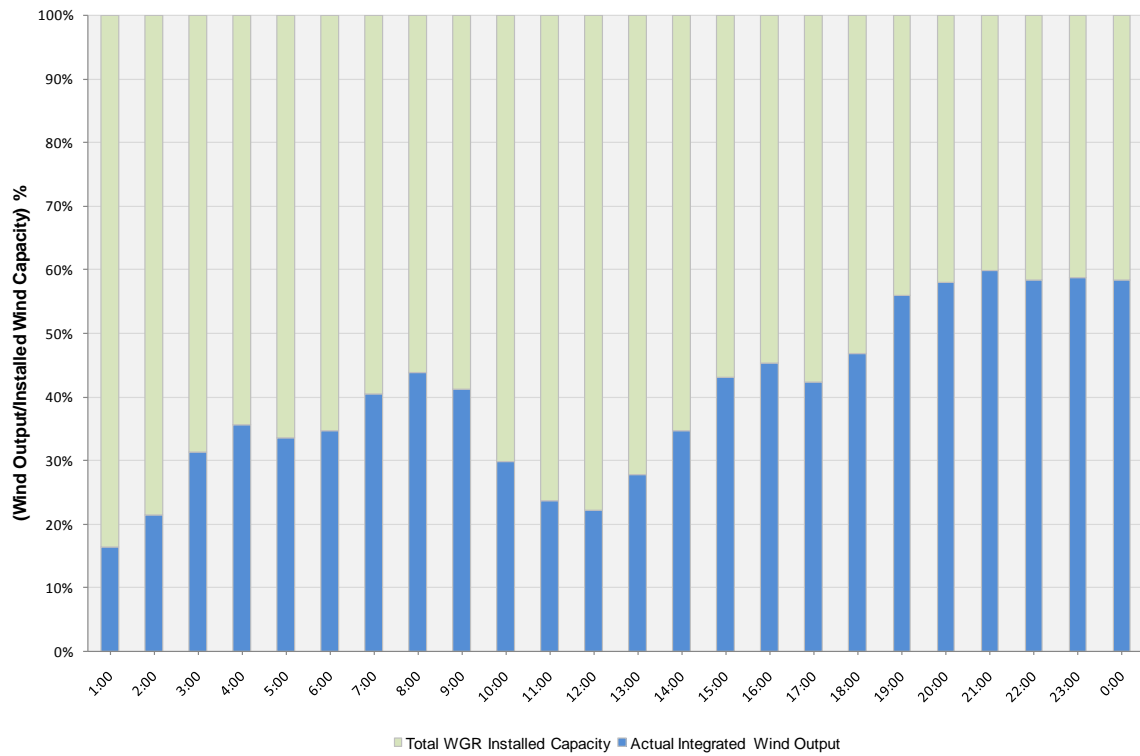
ERCOT Grid Operations Wind Integration Report: 12/03/10

Peak Load	34,318 MW
Load Peak Hour	08
Wind Record 06/12/10	7016 MW
Max Wind value	5777 MW
Wind Peak Hour	20:39:00
Wind Integration %	18.06

Hourly Average Actual Load vs. Actual Wind Output
12-03-2010



Actual Wind Output as a Percentage of the Total Installed Wind Capacity
12-03-2010



Actual Wind Output as a Percentage of the ERCOT Load
12-03-2010

